

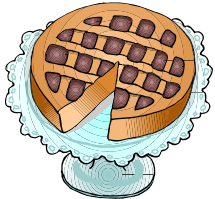
# ASN NEWSLETTER

Alzheimer's Support Network of South Central Massachusetts

Volume 23(2), spring Issue Spring 2011

Editors: Melissa Beauchemin & Roger Lamontagne

April 2011



## ASN BINGO & BAKE SALE

It is happening! ASN will be holding it's much awaited Bingo & Bake Sale on May 1<sup>st</sup>. After completing necessary application for the Bingo permit, ASN is now putting the final details for the fun filled event.

The Bingo & Bake Sale will be held from **1pm to 4 pm on Sunday, May 1<sup>st</sup>**. The location will be at **Accord Adult Day Center, 10 Cudworth Road in Webster**. Bingo prizes will include gift certificates, theme baskets, and cash prizes. Refreshments will be available for purchase. The Bake Sale will have pies, cakes, cookies, and homemade items available. In order to reserve in advance a pie or cake of your choosing, there is a **Pre-Event Ordering available**. To advance order your selection of any of the following pies and cakes, Call Wanda at 774-262-9672 or Roger at 508-769-1715. Advance orders are prepaid only.

**Available pies include:** Boston Cream, Chocolate Cream, Pecan, and Pumpkin. All pies are \$12.

**Available cakes include:** Chocolate and Lemon Cream cakes at \$15 each;

Coconut Cream and Carrot Cakes at \$18 each.

**Chocolate Chip cookies and Oatmeal Raisin cookies** are also available for advance purchase at \$5 per dozen.

Walk-ins on the day of the event are welcome but selection cannot be guaranteed.

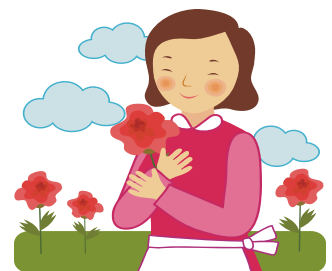
Come with a friend and play some Bingo, enjoy a slice of pie or cake, get a chance to win prizes, and take home some delicious baked goods! And help support our Community Respite Assistance Program!



**BINGO—BAKE  
SALE FUND-  
RAISER  
SUNDAY, May 1**

**1:00—4:00**

To be held at:  
Accord Adult Day  
Center 10 Cudworth  
Rd. in Webster.



**Hint:** Buy a special treat for your Mom for "Mother's Day !

## PRESIDENT'S MESSAGE

### "Goals of Dementia Care"

The goals of dementia care are meant to focus on the process and not on the product. To the extent possible given the capacities of the person with dementia, it is to focus the care on 'doing with', rather than 'doing for'. To focus on the person's strengths helps to create opportunities for success.

Another goal is to de-

velop opportunities for quality interaction through a positive approach and with active encouragement.

Finally, the third goal is to experience opportunities for acceptance at any level of functioning. As the person's abilities diminish, it is helpful to focus on the remaining capabilities as changes occur

over time.

With an understanding of the person's current status and using interpersonal nurturing, dementia care goals can be realized.

Thanks  
for Giving  
and for  
Caring! –  
Roger



## DEMENTIA TRUE OR FALSE QUIZ



1. There are up to 100 different causes of Dementia. True or False?
2. Significant memory loss is common in old age. True or False?
3. In the early stage, the person with Alzheimer's can appear normal to others. True or False?

\*\*\*(answers are located elsewhere in the Newsletter)

## ASN MEMORIAL—*Frank A. Marshall*

The family of Frank A. Marshall of Webster acknowledged the Alzheimer's Support Network for memorial donations in Mr. Marshall's obituary.

ASN is very grateful for their recognition and generosity. ASN relies on the kindness of families to help sustain our caregiver and respite support services.

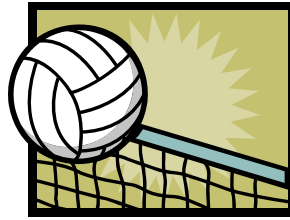


ASN is grateful for  
your generosity.

# COMMEMORATIVE VOLLEYBALL TOURNAMENT

ASN is completing its celebration year of the 25<sup>th</sup> Anniversary of its founding with the ASN Commemorative Volleyball Tournament Celebration & Fundraiser. June 11<sup>th</sup> has been set as the date; with a rain date of June 12<sup>th</sup>. This all-day event will be held at the QuarterKeg Pub on Route 20 in Charlton, the original location of ASN first volleyball tournament event in 1985. Prizes, drawings, refreshments, and fun for participants and their supporters! Volleyball Teams are NOW

being formed. REGISTER NOW as a Team Captain and recruit your players.

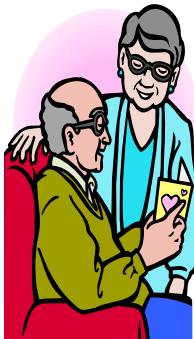


Have fun & Help ASN at the same time!!

Teams are to be co-ed with 6 players, max of 8. How to Register a Team— To secure your place in the tournament, a non-refundable deposit of \$120 is required with your team

name and contact info. Individuals are encouraged to register and will be placed on a team! Team entries are preferred, however. Donations: \$40/per player. \$240/ team. Registering a team will require full donation. A team with fewer than six players can opt to play with less than six OR request help to find individuals to curb the cost. Contact ASN Info Line for the registration form at 508-949-6640, x3100, or call Roger at 508-769-1715.

## FAMILY CAREGIVER SUPPORT AVAILABLE



**Family Caregivers of persons with Alzheimer's dementia can obtain support from either attending one of ASN's Alzheimer Caregiver Support Groups; participating in ASN's Community Respite Services Program; or using ASN's Email Helpline to direct their requests for information at: [info@alzsupportnet.org](mailto:info@alzsupportnet.org).**

*Answers to true or false quiz:*

1. True
2. False
3. True

**HELP ASN** by recruiting family members and friends to become ASN Members.. ASN membership for the calendar year is only \$20.00. Membership forms are available at [www.alzsupportnet.org](http://www.alzsupportnet.org)



**ALZHEIMER'S SUPPORT NETWORK  
OF SOUTH CENTRAL MASSACHUSETTS, INC**

P.P Box 839  
Southbridge, MA  
01550

Call ASN Info Assistance at TRI-VALLEY Inc.  
Phone: 508-949-6640 ext. 3100

*Were on the Web!*  
[www.alzsupportnet.org](http://www.alzsupportnet.org)

## UPCOMING EVENTS AND MEETINGS

### Caregiver Support Groups

**Southbridge:** 1st Tuesday of each month at 7:00 pm, CR1, Mezzanine Level Harrington Memorial Hospital

**Webster:** 2nd Monday of each month at 6:15 pm, Meeting Room Floor G, Webster Public Library



### ASN BOARD MEETINGS

ASN Members are Welcome.  
Call 508-949-6640, Ext. 3100  
for the next meeting date/time/location

### Want to Help ?

Are you interested in being involved with serving others, writing articles, co-leading a support group or educational program?

Call us at 508-949-6640 Ext. 3100

Or email us at:

[info@alzsupportnet.org](mailto:info@alzsupportnet.org)